

Return of the "Evening Star"

The planet Venus has returned to the evening sky. Venus is sometimes called the evening or morning star, even though it is not a star, but a planet. While stars produce their own light, planets shine by reflected light. Sunlight reflects off the side of the planet that faces the Sun. This leaves the opposite side of the planet dark. Because Venus is closer to the Sun than Earth, we see varying amounts of the lit and dark sides.

When Venus is on the opposite side of the Sun, we see mostly the lit side. When Venus is on the same side of the Sun as Earth, we see mostly the dark side. As both

planets move around the Sun, the ratio of lit side versus dark side visible from Earth constantly changes. Thus,

Venus will appear in a gibbous phase for the rest of 2008. By next spring, it will appear as a crescent.



Taken in Salt Lake City in 2005, the above photo is a similar representation of how Venus will be viewable in the night sky this fall. The planet will appear in the gibbous state for the remainder of 2008. Photo credit: Michael Wilson, Astronomy Photo of the Day

To find Venus in the sky, look for a bright "star," low in the southwest after sunset. It will remain low in the southwest evening sky throughout October. Beginning in mid-November, Venus will appear higher in the sky each night. Viewing Highlight: Venus will appear to pass 2 degrees south of Jupiter on the evening of November 30. On the next evening, this planetary duo will be joined by a crescent moon,

Venus appears to go through phases like the Moon. These phases can be detected with good quality telescopes.

making a spectacular celestial triangle.

Birthdays: The Final Frontier

Come embark on an exciting space adventure! Our birthday parties are entertaining, educational, and worry-free. Enjoy V.I.P. treatment, exclusive hands-on science demonstrations, theatre tickets, and a birthday party experience that is "out of this world."

Receive 15% off any birthday adventure with your Clark Planetarium membership.

Please call Talia at (801) 456-4963 or email tbutler@slco.org to book your birthday adventure today.

What's Inside:

Clark Planetarium Gala	2
Director's Corner	2
Member Sale	2
Upcoming Shows	3
Member Event	3
Scout Workshops	4

Director's Corner

It has been another busy year here at Clark Planetarium, from a record number of visits from area schools to the addition of several important new exhibits.

The new *Weight on Other Worlds* exhibit is in place and has become a favorite among families and our youngest visitors.

Our newest exhibit, *Star Power*, explains how the solar panels are able to transform sunlight into electrical energy. *Star Power* also monitors the performance of the 25 kilowatt solar energy array that was installed this summer on the planetarium's roof. This solar energy system was made possible in part by a grant from Rocky Mountain Power's *Blue Sky* program. The planetarium's solar energy array consists of 144 photovoltaic panels that are each capable of generating 190 watts of electricity when exposed to sunlight. You can even monitor the real-time performance of this system on the web at www.clarkplanetarium.org/starpower.

As always, we're deeply grateful to our members for their support of our new programs in our Hansen Dome and ATK IMAX Theatres such as *Dawn of the Space Age*, *Pink Floyd The Wall* and *Fly Me to the Moon 3D*.

Please let us know how we can continue to make your visits to Clark Planetarium an enjoyable and memorable experience for you and your family.



Gala Raises Funds for Education Programs

Clark Planetarium's *Swinging on a Star Gala* presented by Zions Bank on September 25 was a star-studded evening of delicious food, auctions, and excellent entertainment including *Fly Me to the Moon* and *U2*. The Crescent Super Band returned and provided an exciting assortment of swinging tunes that kept the 200 guests moving and grooving throughout the evening. This year's Gala raised \$122,000 for support of Clark Planetarium education programs and recognized our most generous supporters as well as the planetarium's accomplishments.

We'd like to recognize the tremendous support from this year's Gala donors:

Title Sponsor:

Zions Bank

Galaxy Sponsor:

Riester

Supernova Sponsors:

Boeing
MaryBeth Clark
Michael Clark
Eagle Environmental
Goldman Sachs
Chad and Kathy Hurley
L-3 Communications
Sector 10 Services USA Inc.

Red Giant Sponsors:

Chevron
Sen. Jake & Kathleen
Garn
Mountain West Small
Business Finance
US Bank

Black Hole Sponsors:

Evans & Sutherland
Pat & Boyer Jarvis
KSL-TV
Larry & Susan Lunt
Waste Management
Worker's Compensation
Fund

Quasar Sponsor:

Kennecott Utah Copper
John & Jean Witmer

Restaurant Sponsors:

Baxter's
Biaggi's
Costa Vida
Fleming's Prime
Steakhouse
Haagen-Dazs
Jason's Deli
McGrath's Fish House
Thaifoon
Z'Tejas

A warm thanks to Gala Chairman Laurie Hofmann and the Gala Board for making this event possible. Gala Board members included Cali Wolf, Maggie Strasser, Toni Carter, Dani Weigand, Carole MacLeod, Senator Jake Garn, Holly Lamb, Cynthia Lyman, Seth Jarvis, Stacey Carroll, Lynne Marie Judd, Lydia Martinez, Holli McDonald, Carl Malaret, Jeri Panek, Linda Davies.

Members Holiday Store Sale

Clark Planetarium members will receive 20% off regular store items including accessories for telescopes, and 10% off telescopes and binoculars in the Planet Fun Clark Planetarium Gift Store from November 28 through December 7, 2008.

The store has some great holiday gift items. We have a wide variety of telescopes that make for a great gift for the entire family. Available this year is a new version of our Lightning Reaction game called the "Lightning Reaction Revenge." A wide variety of K'Nex brand snap together "lego-type" building block kits are available this season. K'Nex products motivate

children to build and create.

We have old favorites such as Slinky products, Hoberman Spheres, Rubik's Cube, and the wonderfully wacky Giantmicrobes. These germs make an excellent stocking stuffer for the holidays.

From November 28, 2008 through January 2, 2009, when you purchase \$100 or more in store merchandise you will receive two FREE tickets for any show in the ATK IMAX Theatre or the Hansen Dome Theatre. With a \$200 store purchase you will receive four FREE tickets. We look forward to seeing you this holiday season at Clark Planetarium.

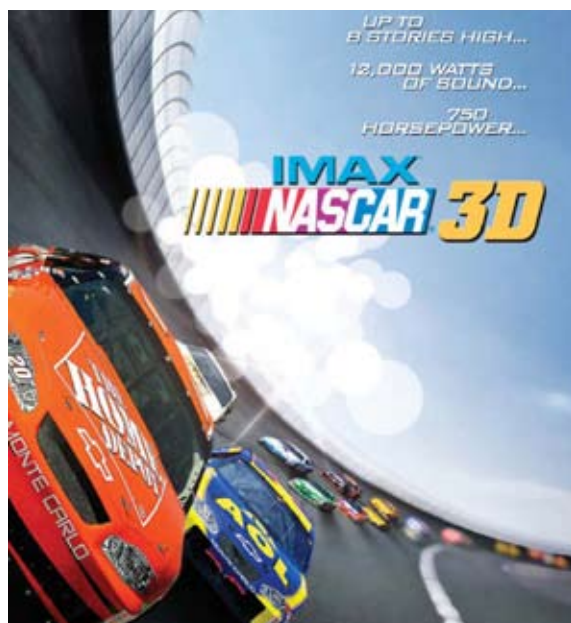
Visit www.clarkplanetarium.org to order show tickets.

NASCAR 3D: The IMAX Experience

Put yourself in the driver's seat this holiday season and experience speeds of more than 200 mph with the magic of IMAX 3D. NASCAR 3D: The IMAX Experience will play in the ATK IMAX Theatre from Friday, November 28 through Thursday, January 1, 2009.

NASCAR 3D will take fans into reverse to review the history of the nation's most revered sport, told from the viewpoint of some of its legendary drivers, and then thrust into high gear with a look at the thrilling phenomenon that is NASCAR today.

It introduces the revered drivers and their lives both on and off the track, as well as their dedicated teams and fans whose unflinching support is essential to success. The film also steers its focus on the science of today's racing technology, and the teamwork that binds it together. Packed with heart pounding, behind-the-wheel action, NASCAR 3D: The IMAX Experience delivers high-speed thrills at every turn.



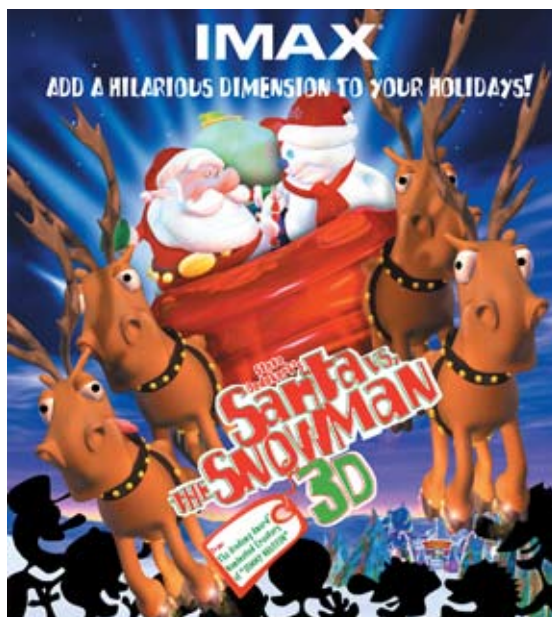
NASCAR 3D Member Event

A special screening of NASCAR 3D will be the feature of a FREE member event on Wednesday, Nov. 12, 2008 from 7 to 9 p.m. This event will also include presentations by local experts in the field of auto racing including a driver from Rocky Mountain Raceway and members of the Miller Motorsports Park staff. In addition, our featured guests will be available to answer questions and provide additional information on auto racing along the Wasatch Front following the film. Members will also have the opportunity to view race cars on display throughout the evening. We will be sending a follow-up email with additional information near the end of October.

Seating will be on a first come first serve basis the day of the event. If you receive the newsletter by mail and would like additional information about this event, please email Carl Malaret at cmalaret@slco.org to have your email added to the membership database.

Santa vs. the Snowman 3D Returns

From the Academy Award nominated team that brought you Jimmy Neutron, comes the IMAX® 3D holiday film, *Santa vs. the Snowman 3D*. The film opens Friday, November 28, 2008 and will play through Thursday, January 1, 2009. The film tells the story of a lonely Snowman who at first is swept away by the magical wonders of Santa's Village, only to ultimately wage war on Santa because he's jealous of all the attention Santa gets during Christmas time. An epic-scale polar war develops. The hilarious battle features such holiday defense mechanisms as hot chocolate squirt guns, giant Igloo Robot Walkers and even a 50-foot tall toy soldier manned by Santa himself.



Holiday Light Show

Holiday Music Magic offers an entertaining mix of seasonal music and full-dome animation for every age! The show features a variety of holiday music from Mannheim Steamroller and Burl Ives to Brenda Lee and local musician Kurt Bestor, choreographed with 3-D immersive video, laser imagery, and full-dome scenery. *Holiday Music Magic*, an original production of Clark Planetarium, will play from Friday, November 28, 2008 to Thursday, January 1, 2009.

Clark Planetarium Memberships make great gifts for any occasion.



PRESORTED
STANDARD
U.S. POSTAGE PAID
SALT LAKE CITY, UT
PERMIT NO. 2880

Clark Planetarium Member Connections

Fall 2008

Scout Workshops Returning This Fall

Boy Scout

Merit Badge Workshops

October 25, 9:30 a.m.-12:30 p.m.

December 5, 9:30 a.m.-12:30 p.m.

Complete all the requirements for the Astronomy Merit Badge! Take an in-depth look at our closest star, the Sun, and our nearest neighbor, the Moon, before moving out to the distant stars in the night sky. You'll learn to identify bright stars, constellations, the zodiac and the visible planets. We'll show you how to find the planets for an entire year! Learn about exciting careers in astronomy and explore the uses and inner workings of telescopes.

Junior Girl Scout

Sky Search Badge Workshop

October 18, 10:00 a.m. – 12:00 p.m.

Make and learn to use a star chart to help find stars and constellations for an entire year. Hear tales of some of the most prominent seasonal constellations. Locate visible planets and find your directions at night.

Cost for workshops are \$8 per scout, \$4 per adult. Tickets go on sale 10 weeks prior to each workshop, and prepayment is required. You can purchase tickets online at www.clarkplanetarium.org or at Clark Planetarium's ticket counter.

For additional information, contact Rob Morris at 801-707-9593 or email rmorris@slco.org.

Kronos Quartet "Sun Rings" Promotion

Pay just \$20 per ticket (regularly \$37.50) to the Kronos Quartet "Sun Rings" performance when you show your Clark Planetarium membership card or theatre ticket stub at time of purchase.

Commissioned by NASA, this performance includes evocative music with sounds recorded in space as well as multi-media images of the cosmos.

The performance will be held Thursday, Nov. 13 at Kingsbury Hall. For more information visit www.kingsburyhall.org or call 801-581-7100.